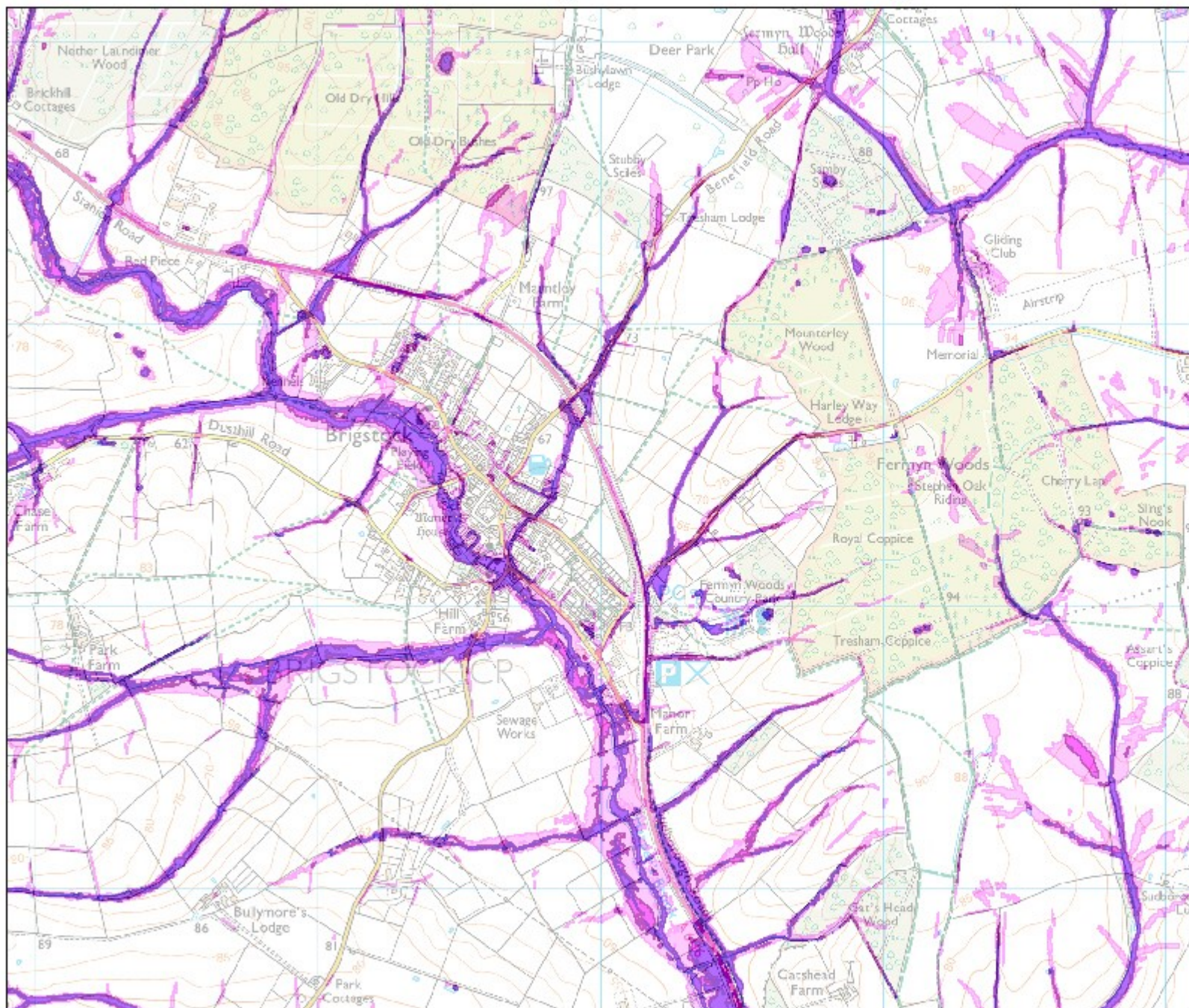


## Site 6 and Site 7. Risk of Flooding from Surface Water. September 2016



Northamptonshire  
County Council

Scale 1:20,000

### Legend

- High
- Medium
- Low
- Very Low

### Likelihood of Flooding from Surface Water

- High:** Greater than or equal to 1 in 30 (3.3 percent) chance in any given year.
- Medium:** Less than 1 in 30 (3.3 percent) but greater than or equal to 1 in 100 (1 percent) chance in any given year.
- Low:** Less than 1 in 100 (1 percent) but greater than or equal to 1 in 1000 (0.1 percent) chance in any given year.
- Very Low:** Less than 1 in 1000 (1 percent) chance in any given year.

This information is shown on the Risk of Flooding from Surface Water map on the Environment Agency website.

This map is based upon Ordnance Survey material with the permission of Ordnance Survey on behalf of the Controller of Her Majesty's Stationary Office © Crown copyright. Northamptonshire County Council Licence No. 100019331. © Environment Agency copyright and/or database rights 2016. All rights reserved.