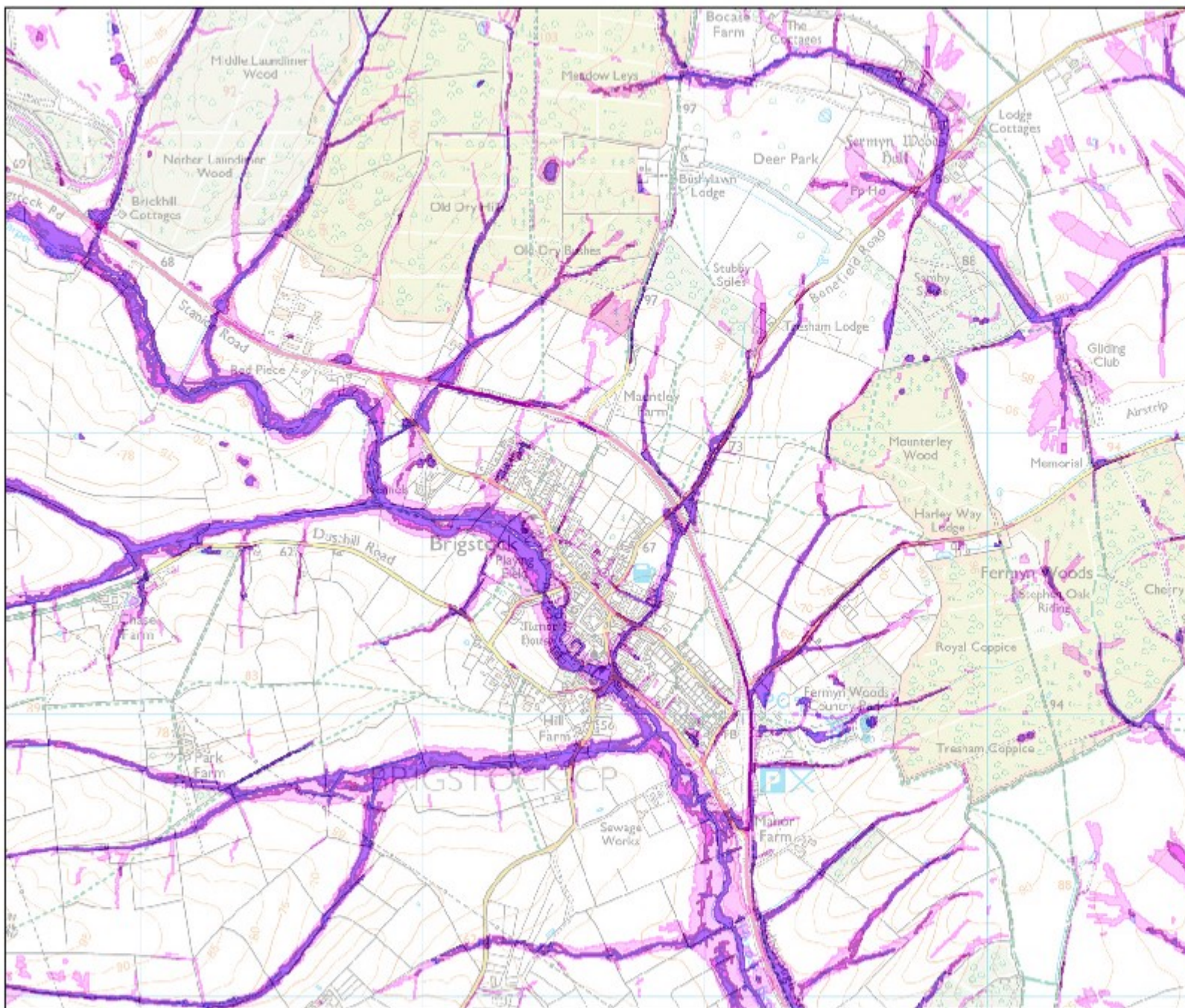



Site 2 Land off Woodyard Close. Risk of Flooding from Surface Water. September 2016





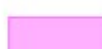

N



Northamptonshire
County Council

Scale 1:20,000

Legend

-  High
-  Medium
-  Low
-  Very Low

Likelihood of Flooding from Surface Water

High: Greater than or equal to 1 in 30 (3.3 percent) chance in any given year.

Medium: Less than 1 in 30 (3.3 percent) but greater than or equal to 1 in 100 (1 percent) chance in any given year.

Low: Less than 1 in 100 (1 percent) but greater than or equal to 1 in 1000 (0.1 percent) chance in any given year.

Very Low: Less than 1 in 1000 (1 percent) chance in any given year.

This information is shown on the Risk of Flooding from Surface Water map on the Environment Agency website.